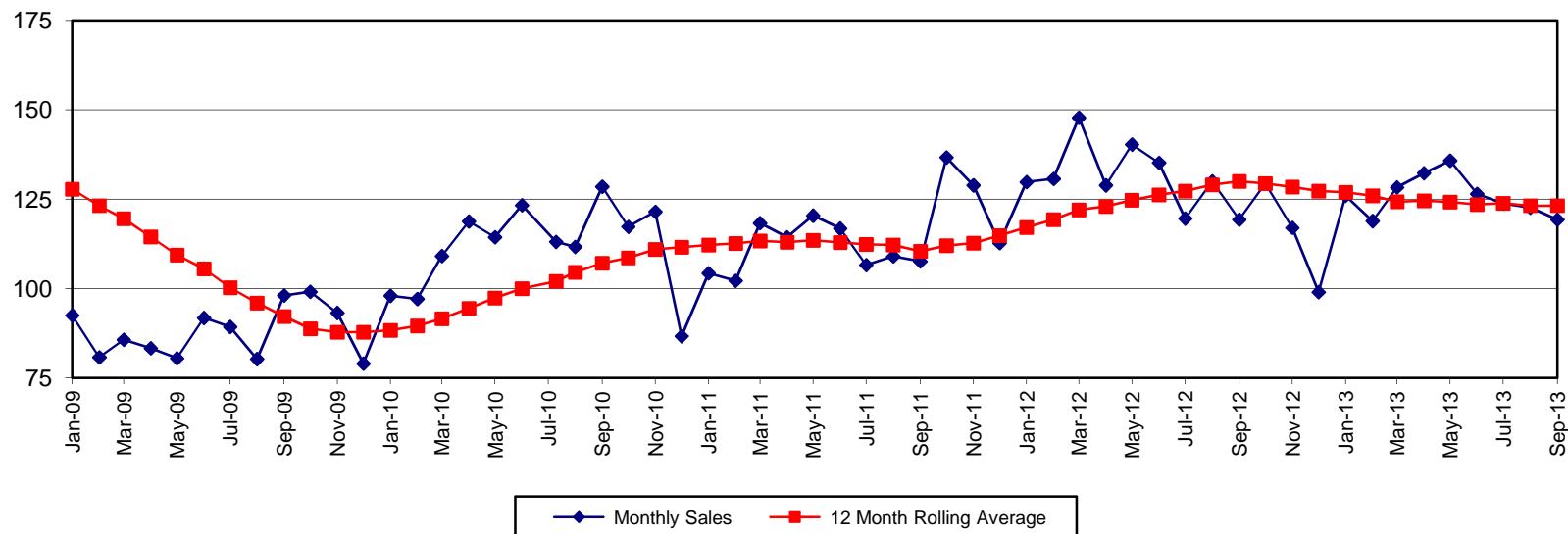




Ashland Performance Materials Sales

(\$ in millions)



Monthly Sales (\$ in millions)*

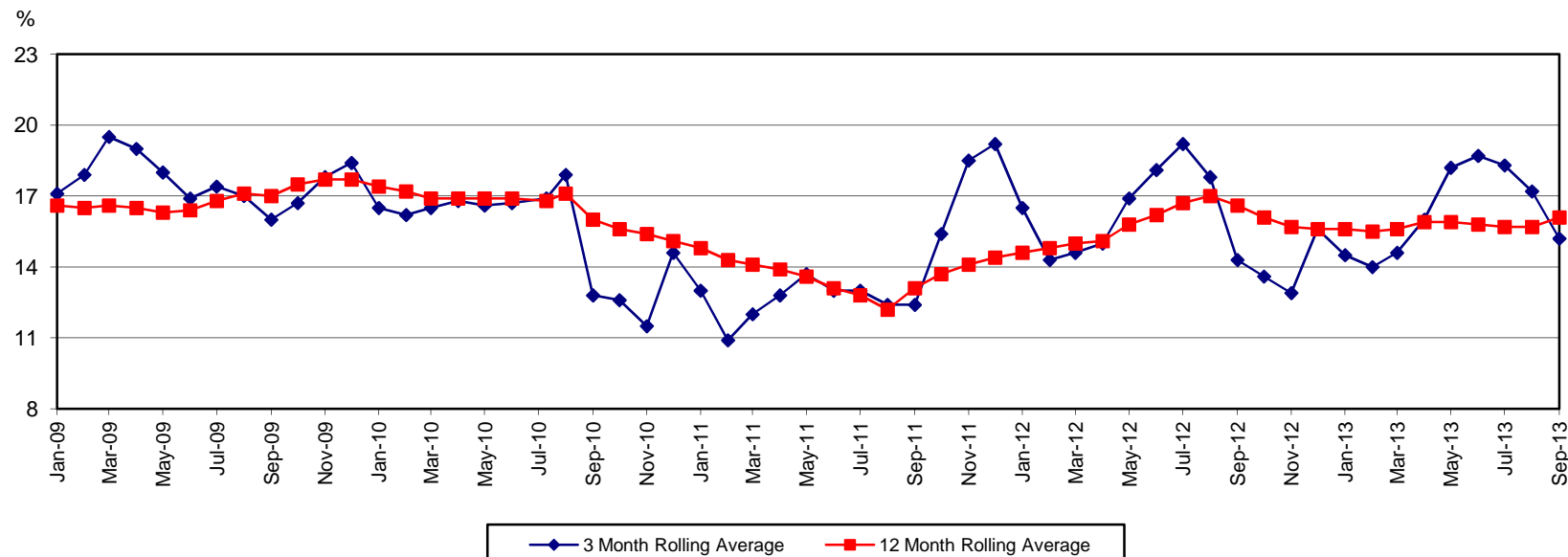
	2009	2010	2011	2012	2013
Jan	92.5	98.0	104.3	129.8	126.0
Feb	80.8	97.1	102.2	130.7	118.9
Mar	85.7	109.1	118.3	147.8	128.3
Apr	83.3	118.8	114.4	128.9	132.3
May	80.5	114.4	120.4	140.3	135.8
Jun	91.8	123.3	116.8	135.2	126.5
Jul	89.3	113.1	106.6	119.6	123.8
Aug	80.3	111.7	109.0	130.0	122.6
Sep	98.1	128.5	107.6	119.3	119.3
Oct	99.1	117.3	136.7	129.4	
Nov	93.2	121.5	128.9	117.0	
Dec	79.0	86.7	112.7	99.0	

12 Month Rolling Average (\$ in millions)*

	2009	2010	2011	2012	2013
Jan	127.8	88.3	112.2	117.1	126.9
Feb	123.2	89.6	112.6	119.3	126.0
Mar	119.6	91.6	113.3	122.0	124.3
Apr	114.5	94.5	113.0	123.0	124.6
May	109.4	97.4	113.5	124.7	124.2
Jun	105.5	100.0	112.9	126.2	123.5
Jul	100.3	102.0	112.4	127.3	123.9
Aug	96.0	104.6	112.2	129.0	123.2
Sep	92.2	107.1	110.4	130.0	123.2
Oct	88.8	108.6	112.0	129.4	
Nov	87.8	111.0	112.7	128.4	
Dec	87.8	111.6	114.8	127.3	

*NOTE: On November 30, 2010, the Casting Solutions business was contributed into an expanded joint venture with Süd-Chemie and is no longer reflected in these numbers from December 2010 moving forward. All information presented subsequent to September 2011 includes activity related to ISP's Elastomers business that was acquired on August 23, 2011.

Ashland Performance Materials Gross Profit %



3 Month Rolling Average (%)*

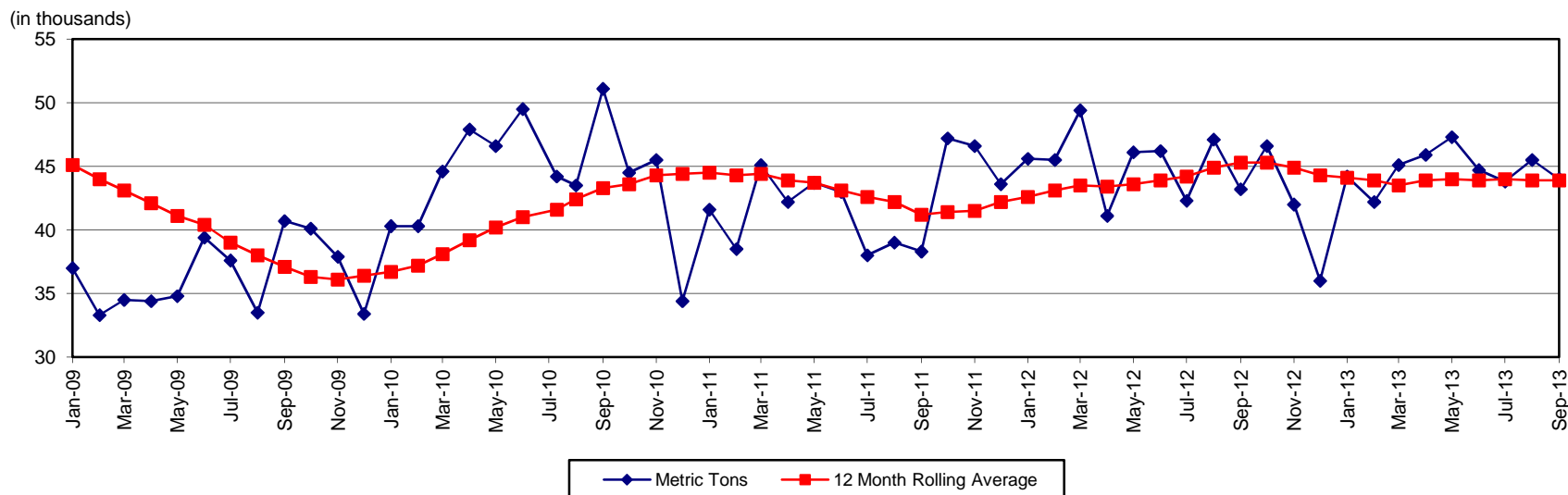
	2009	2010	2011	2012	2013
Jan	17.1	16.5	13.0	16.5	14.5
Feb	17.9	16.2	10.9	14.3	14.0
Mar	19.5	16.5	12.0	14.6	14.6
Apr	19.0	16.8	12.8	15.0	16.0
May	18.0	16.6	13.7	16.9	18.2
Jun	16.9	16.7	13.0	18.1	18.7
Jul	17.4	16.9	13.0	19.2	18.3
Aug	17.0	17.9	12.4	17.8	17.2
Sep	16.0	12.8	12.4	14.3	15.2
Oct	16.7	12.6	15.4	13.6	
Nov	17.8	11.5	18.5	12.9	
Dec	18.4	14.6	19.2	15.6	

12 Month Rolling Average (%)*

	2009	2010	2011	2012	2013
Jan	16.6	17.4	14.8	14.6	15.6
Feb	16.5	17.2	14.3	14.8	15.5
Mar	16.6	16.9	14.1	15.0	15.6
Apr	16.5	16.9	13.9	15.1	15.9
May	16.3	16.9	13.6	15.8	15.9
Jun	16.4	16.9	13.1	16.2	15.8
Jul	16.8	16.8	12.8	16.7	15.7
Aug	17.1	17.1	12.2	17.0	15.7
Sep	17.0	16.0	13.1	16.6	16.1
Oct	17.5	15.6	13.7	16.1	
Nov	17.7	15.4	14.1	15.7	
Dec	17.7	15.1	14.4	15.6	

*NOTE: Information from June 2013 has been adjusted to exclude a \$17 million charge related to a lower of cost or market adjustment within the Elastomers line of business. On November 30, 2010, the Casting Solutions business was contributed into an expanded joint venture with Süd-Chemie and is no longer reflected in these numbers from December 2010 moving forward. All information presented subsequent to September 2011 includes activity related to ISP's Elastomers business that was acquired on August 23, 2011.

Ashland Performance Materials Volume in Metric Tons



Metric Tons (in thousands)*

	2009	2010	2011	2012	2013
Jan	37.0	40.3	41.6	45.6	44.2
Feb	33.3	40.3	38.5	45.5	42.2
Mar	34.5	44.6	45.1	49.4	45.1
Apr	34.4	47.9	42.2	41.1	45.9
May	34.8	46.6	43.7	46.1	47.3
Jun	39.4	49.5	43.0	46.2	44.7
Jul	37.6	44.2	38.0	42.3	43.8
Aug	33.5	43.5	39.0	47.1	45.5
Sep	40.7	51.1	38.3	43.2	44.0
Oct	40.1	44.5	47.2	46.6	
Nov	37.9	45.5	46.6	42.0	
Dec	33.4	34.4	43.6	36.0	

12 Month Rolling Average (in thousands)*

	2009	2010	2011	2012	2013
Jan	45.1	36.7	44.5	42.6	44.1
Feb	44.0	37.2	44.3	43.1	43.9
Mar	43.1	38.1	44.4	43.5	43.5
Apr	42.1	39.2	43.9	43.4	43.9
May	41.1	40.2	43.7	43.6	44.0
Jun	40.4	41.0	43.1	43.9	43.9
Jul	39.0	41.6	42.6	44.2	44.0
Aug	38.0	42.4	42.2	44.9	43.9
Sep	37.1	43.3	41.2	45.3	43.9
Oct	36.3	43.6	41.4	45.3	
Nov	36.1	44.3	41.5	44.9	
Dec	36.4	44.4	42.2	44.3	

*NOTE: On November 30, 2010, the Casting Solutions business was contributed into an expanded joint venture with Süd-Chemie and is no longer reflected in these numbers from December 2010 moving forward. All information presented subsequent to September 2011 includes activity related to ISP's Elastomers business that was acquired on August 23, 2011.